



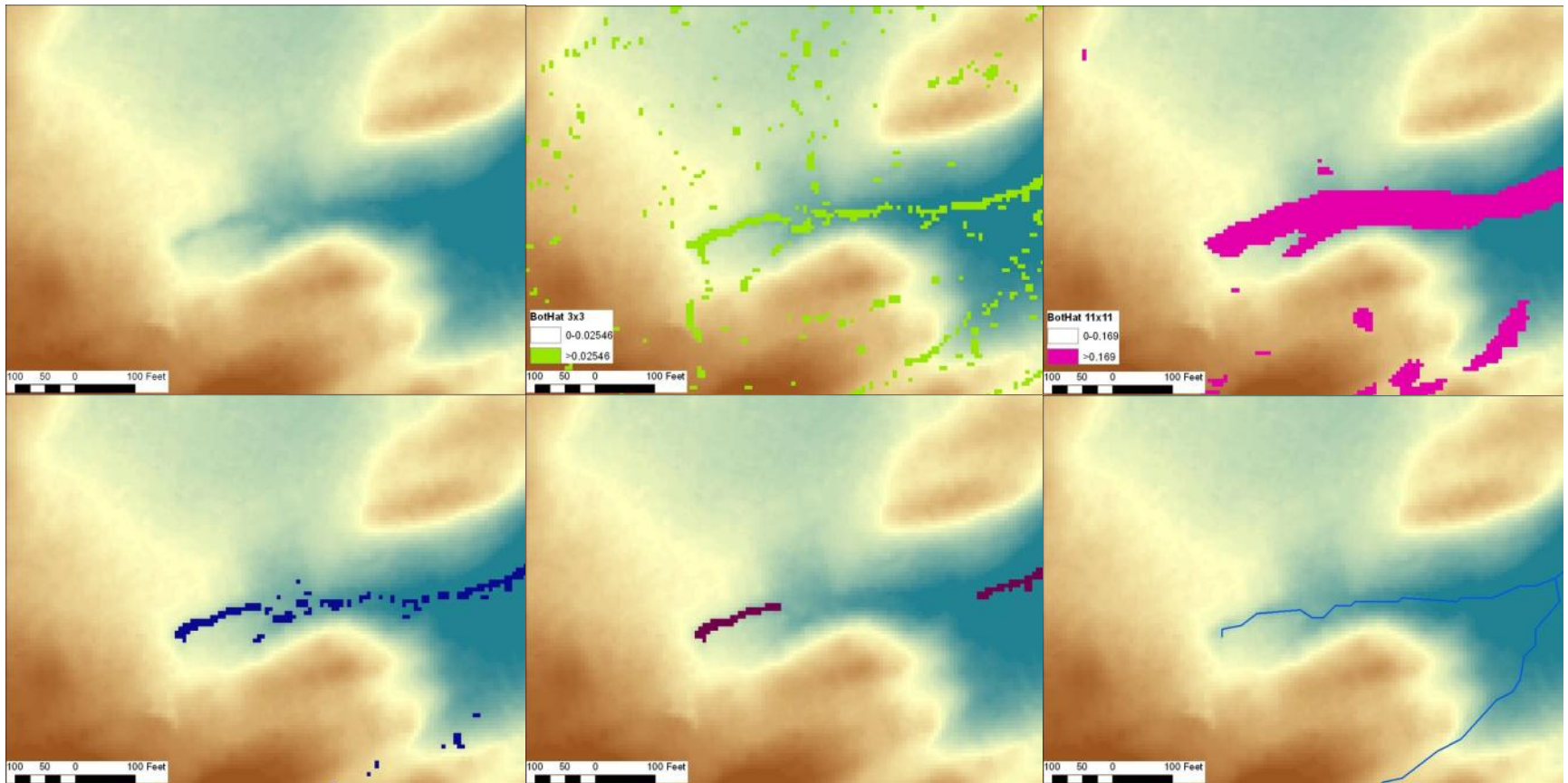
Flow Monitoring in Small Intermittent Headwater Streams

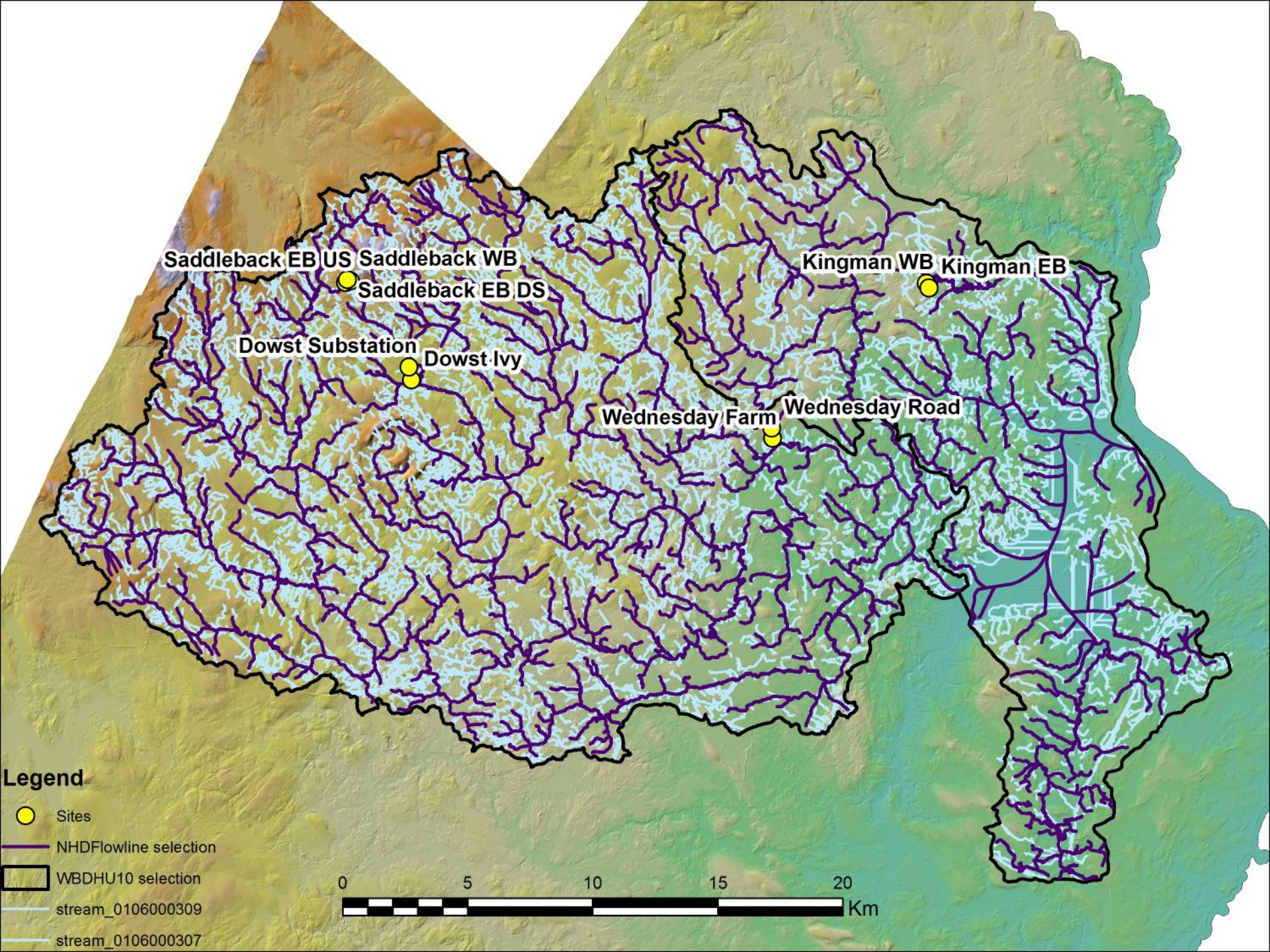
Neil Olson

NH Dept. Environmental Services

NH Geological Survey

Previous work extracting headwater streams from LiDAR





Permanance

- Nine streams in the seacoast region were fitted with simple state sensors following the design of Bhamjee and Lindsay 2011
- Streams were unmapped tributaries to 1st order NHD streams



Saddleback EB US

Dry



Wet



Dowst Ivy

Dry

Wet



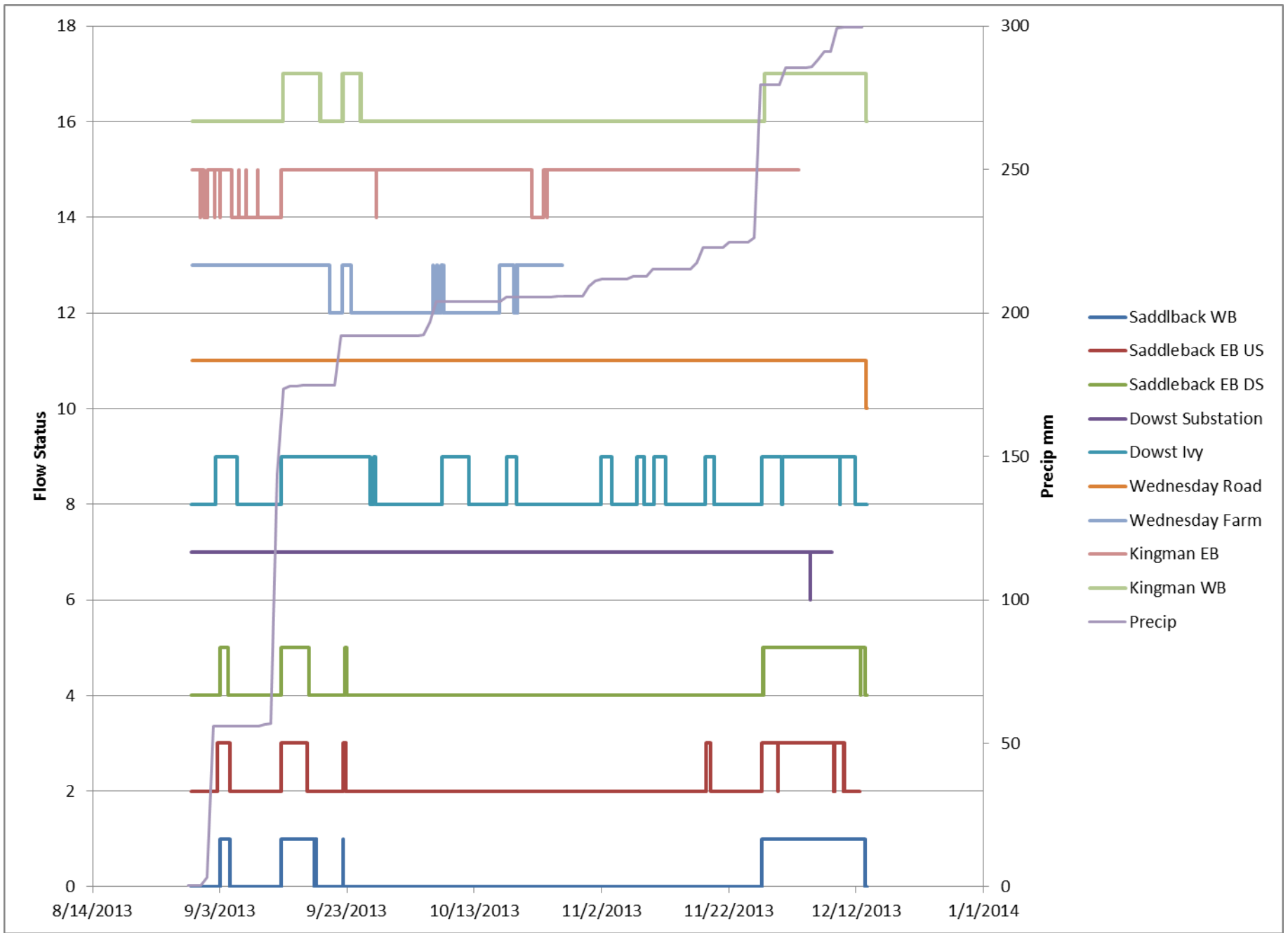
Kingman EB

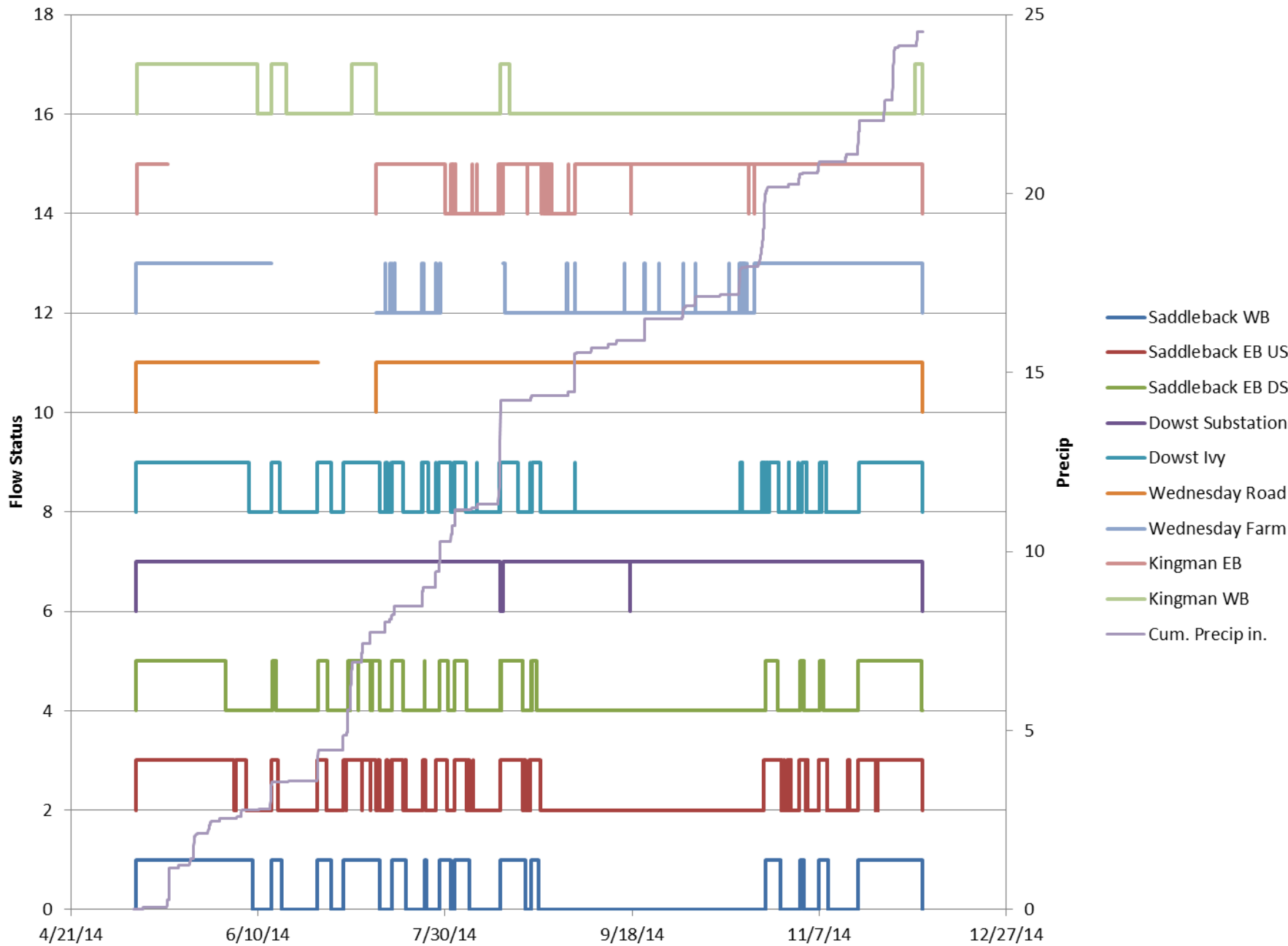
“Dry”

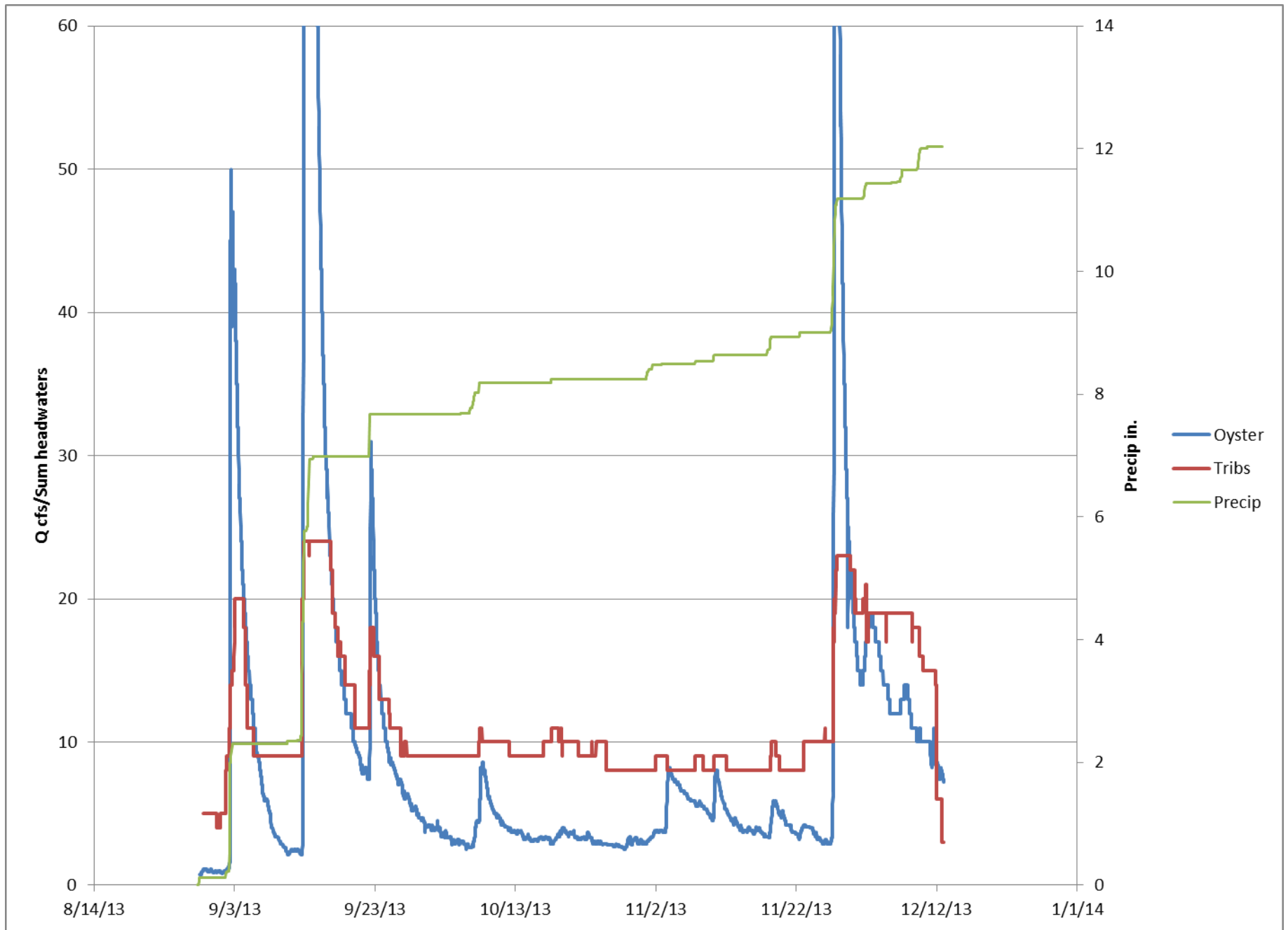


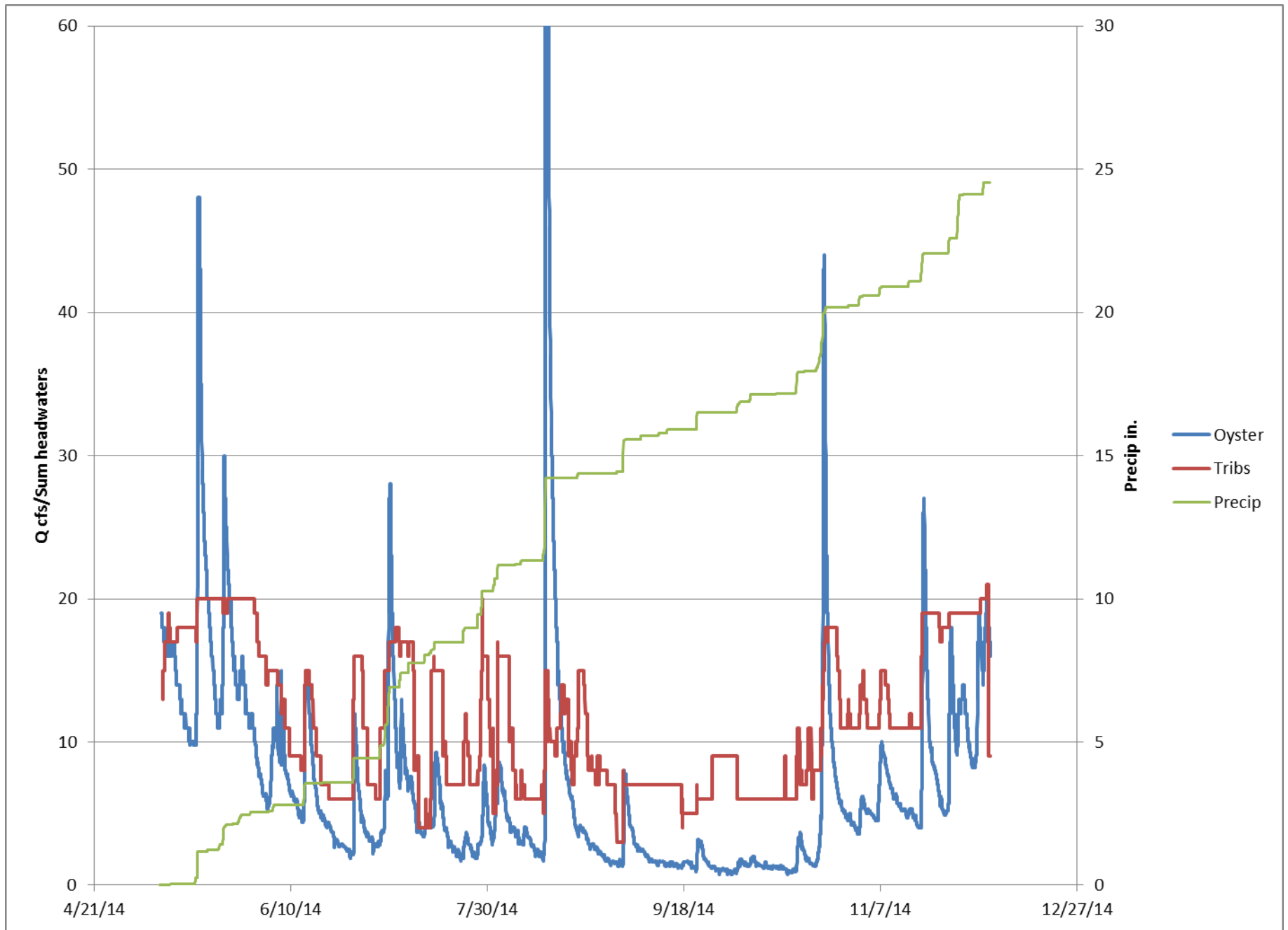
Wet

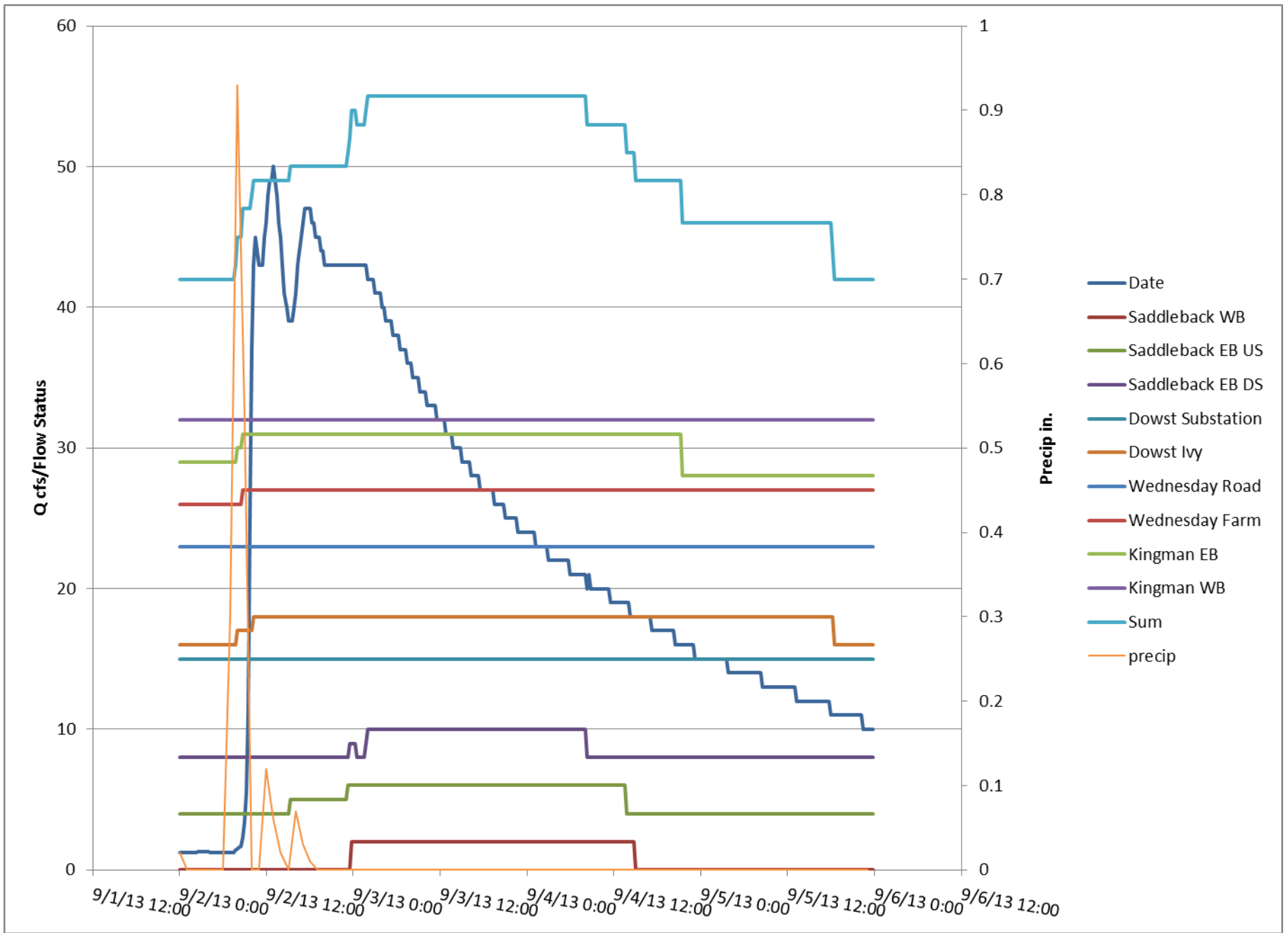


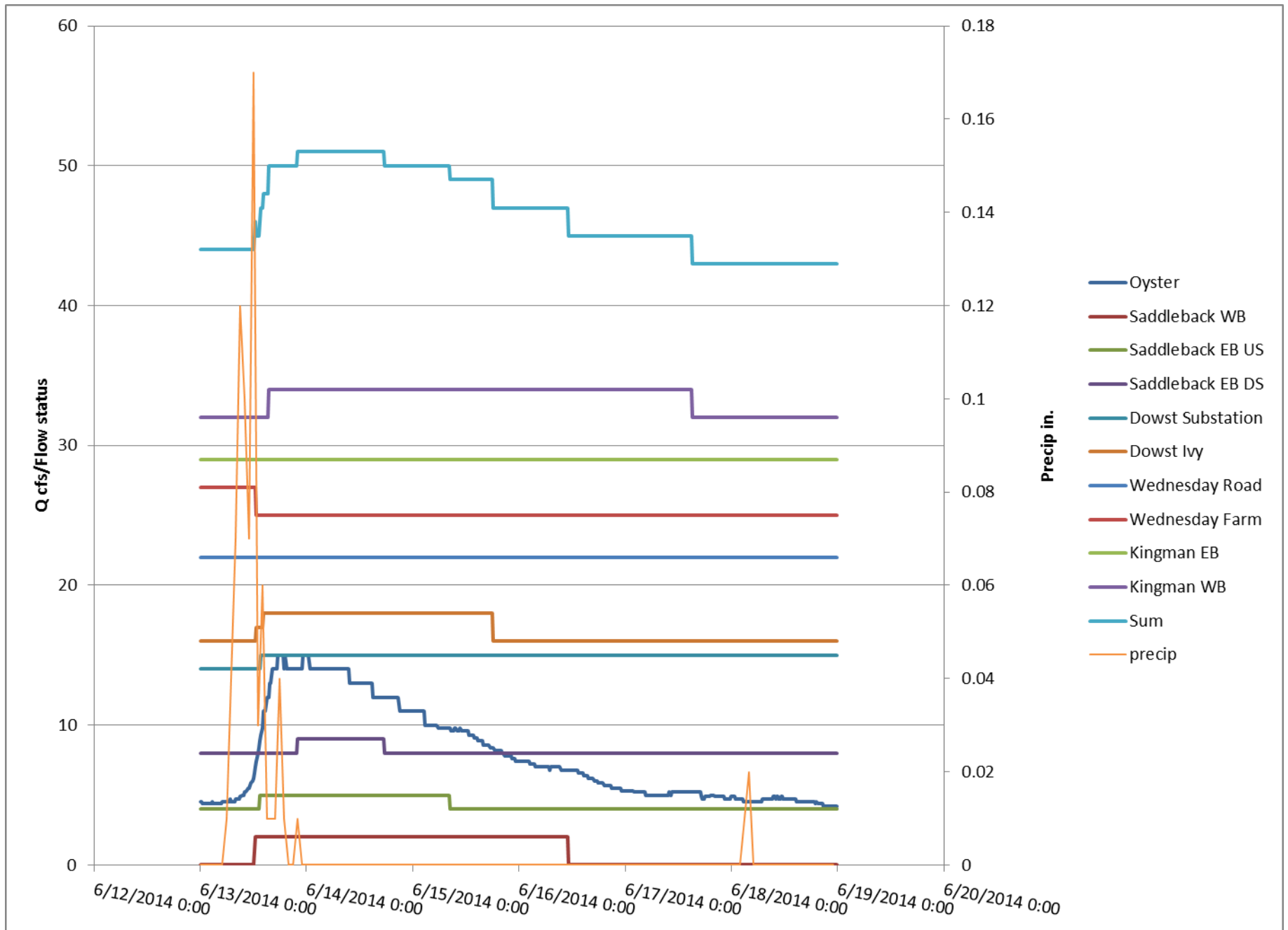


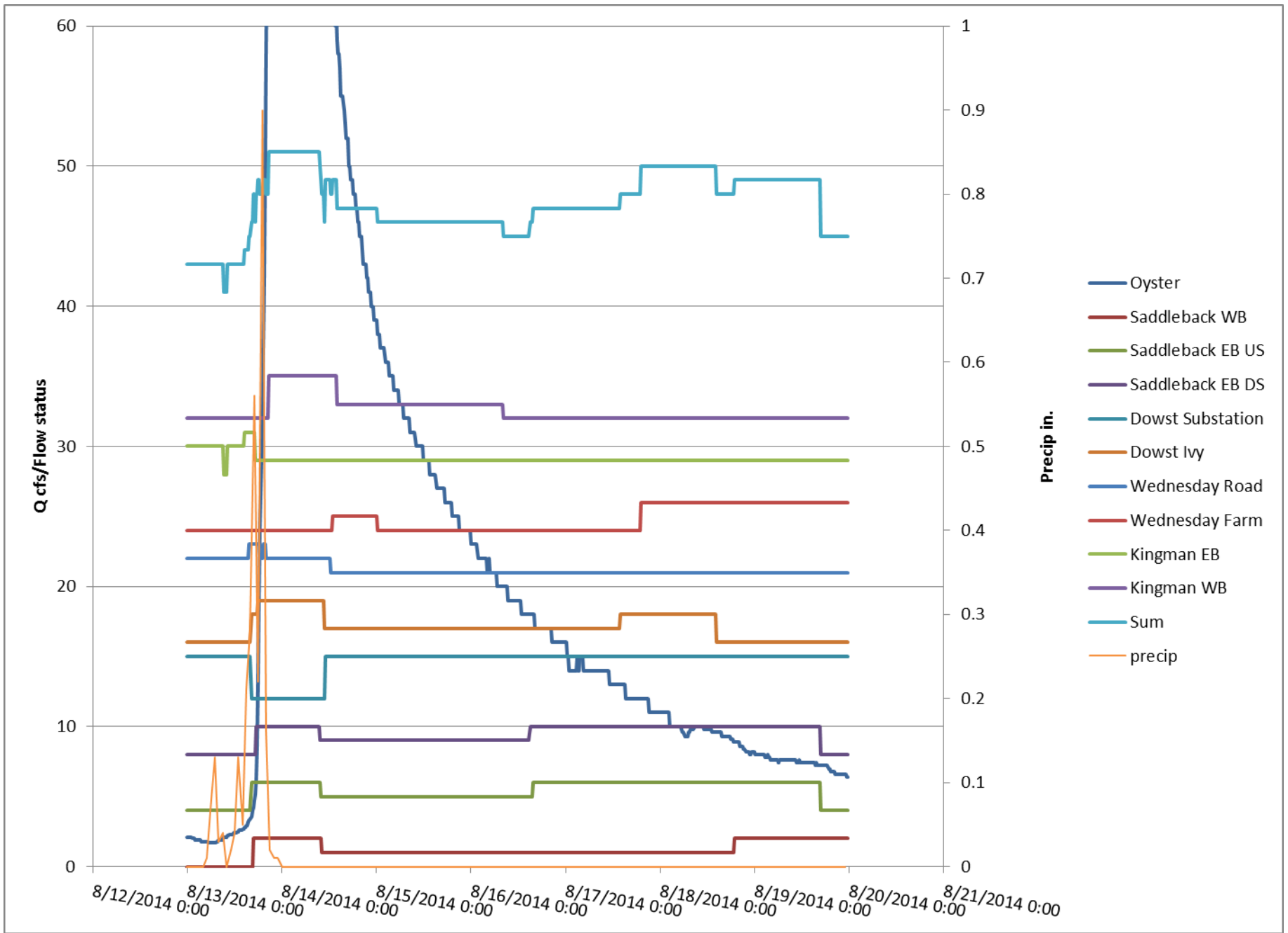


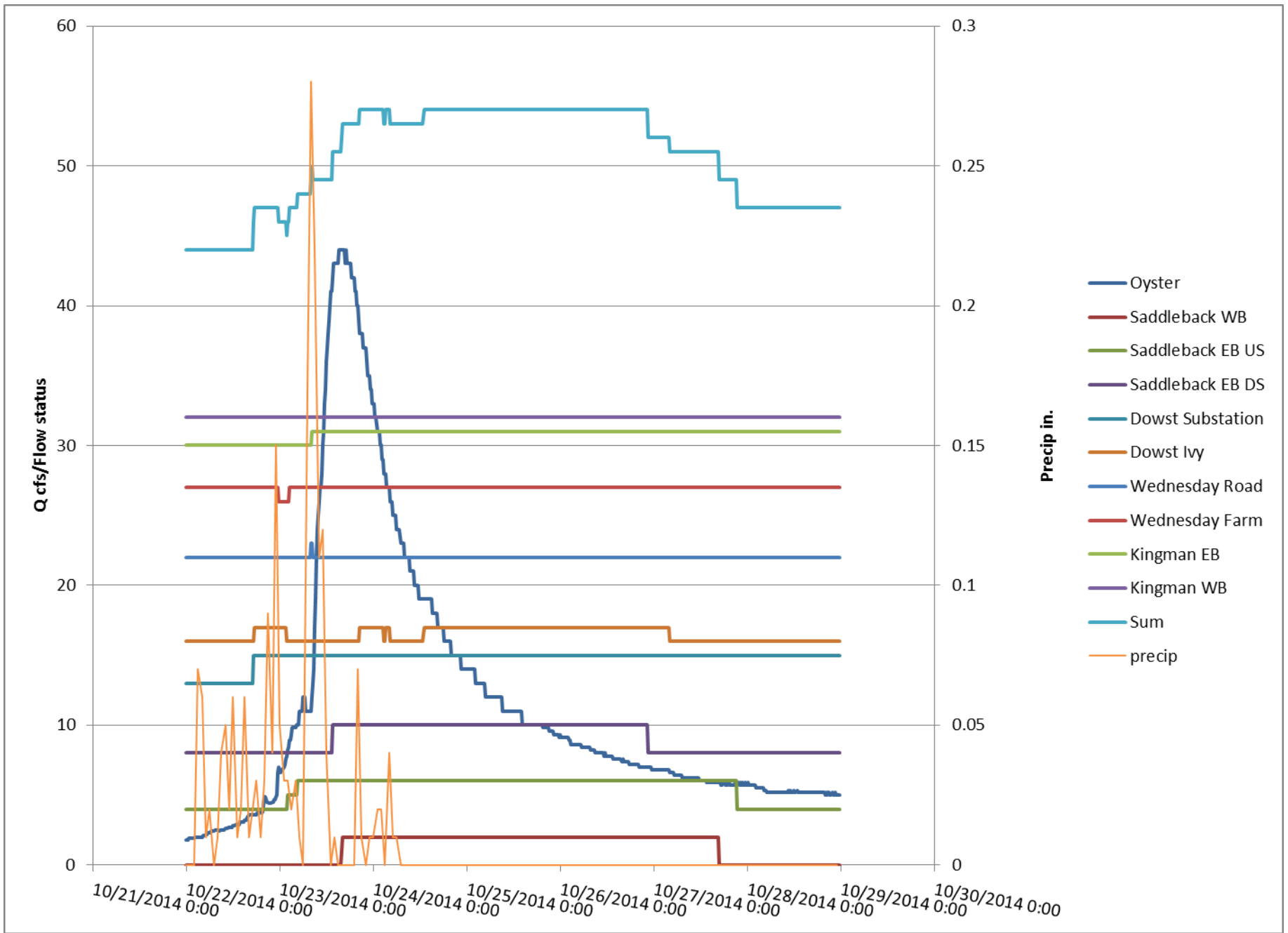


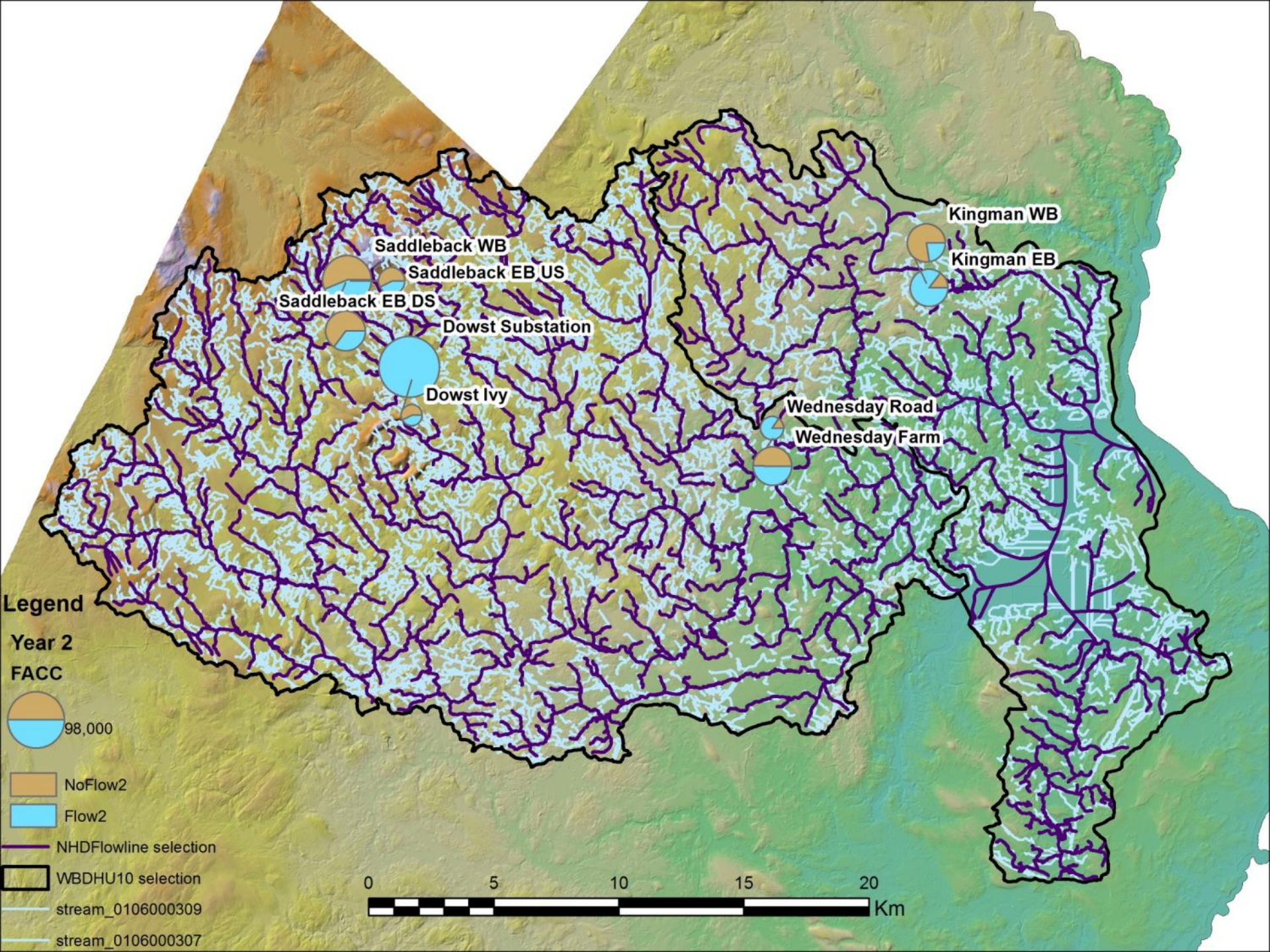


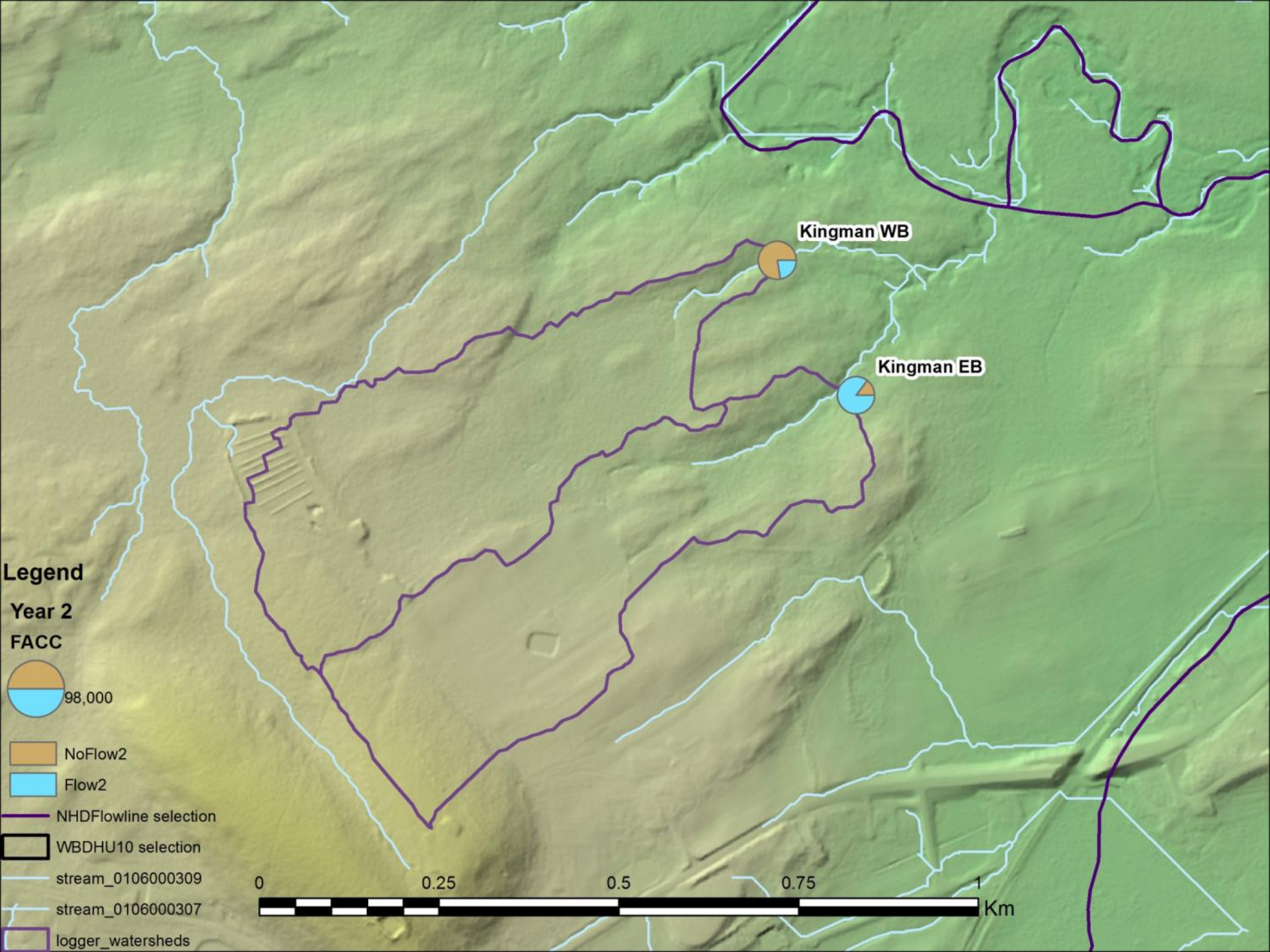




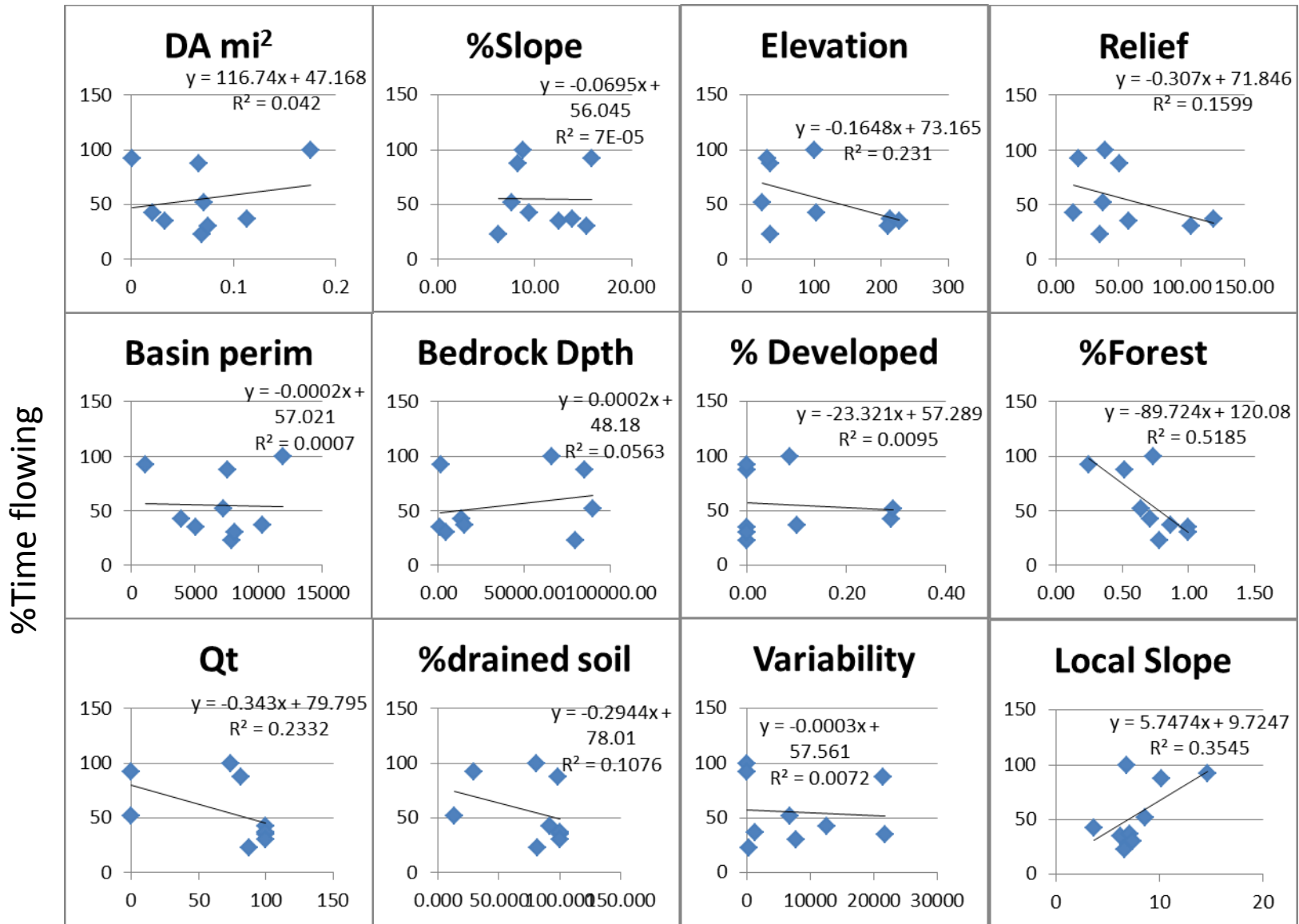


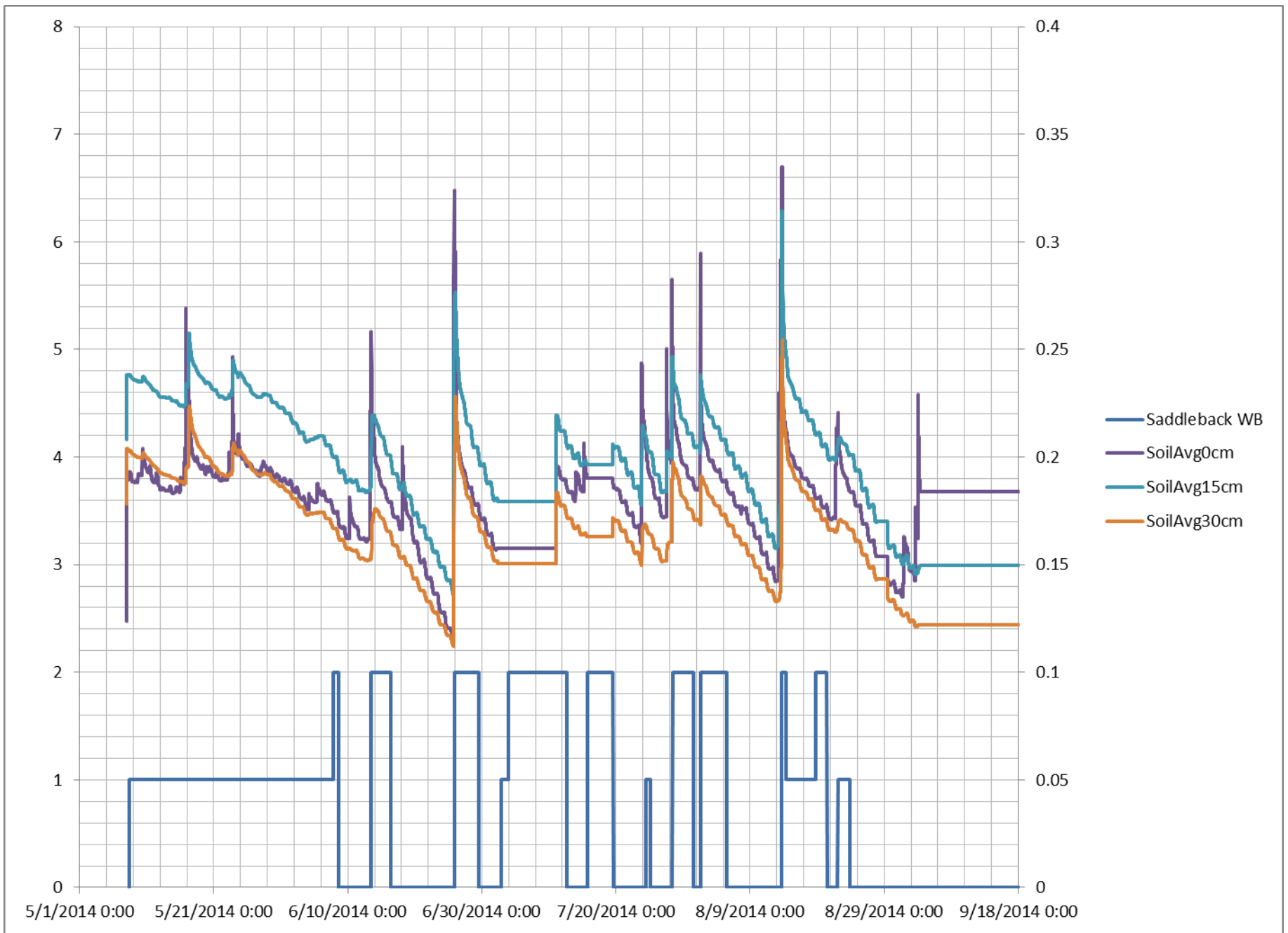






Watershed Characteristics





Acknowledgements

Funding for original stream mapping provided by USGS grant
G11AC20527

Thanks to Rick Chormann, Jeremy Nicolletti, Shan Zuidema, Matt
Davis, Jake Setera and Madeleine Mineau